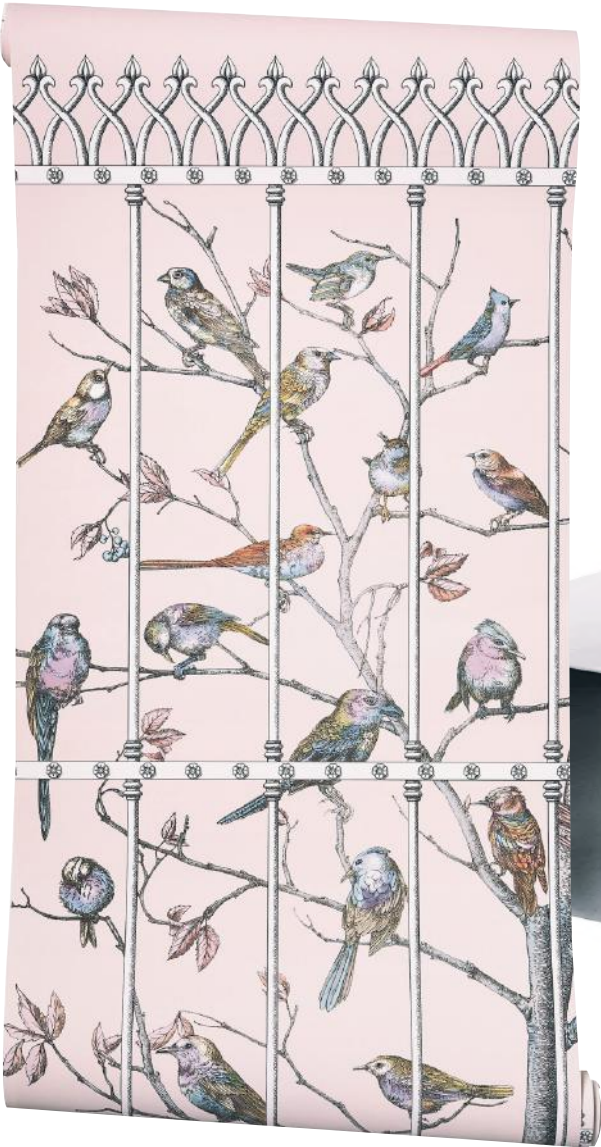


DESIGN & DECORATING

THE MEDIATOR

# Heavy Metal Gets a Lift

**The Conflict** One roommate refuses to part with a steel-and-glass coffee table that exudes masculinity, and the other loves their avian-themed wallpaper on a pink background. Three designers suggest bridges across the stylistic chasm



Cole & Son and Fornasetti Collaboration  
Uccelli 114/11022 Wall Covering, \$396 per 2-panel set, [leejofa.com](http://leejofa.com)



Mondo Coffee Table, from \$3,036, [okha.com](http://okha.com)



**Solution 1**  
**Introduce a light both architectural and warm.** San Francisco designer Kristen Peña proposed Allied Maker's ADA Alabaster Sconce. Its defined linear elements connect with the slick coffee table, while the stone diffuser guarantees a gentle light. The table is like the sexiest person in the room, said Ms. Peña. "The sconce brings that sexiness and the wallpaper's softness into the same realm." \$1,100, [alliedmaker.com](http://alliedmaker.com)

**Solution 2**  
**Choose a modern, white sofa.** The performance linen on Williams Sonoma's Catalina Sofa tenderizes its hard lines and acts like the walls of an art gallery, noted New York designer Michael Garvey. When you pair the sofa with the bold, active bird pattern, "you can really appreciate the wallpaper, making it the room's objet d'art while maintaining the modern black-and-white relationship between the table and sofa." From \$2,295. [williams-sonoma.com](http://williams-sonoma.com)



**Solution 3**  
**Add an edgy mirror.** The Half Moon Mirror, recommended by Katherine Carter, a designer in Venice Beach, Calif., combines the simple geometry of a semicircle and an inverted ziggurat with the sensuality of its hand-painted silk fibers. "The charcoal gray fringe, one degree from black, speaks to the masculine table, while its soft tactility connects back to the feminine wall covering," she said. \$2,800, [garde-shop.com](http://garde-shop.com) —Eleanore Park



FRESH PICKS

## Glass Action

The phrase "good bones" pops up in design discussions, but for some of the glasses in the OAO Works 31.3 project, actual bones matter. Using old-world techniques, Czech glassmakers crush cow bones, minerals, and other local ingredients to create one-of-a-kind blues, lav-

enders and pinks. The precise makeup of each set, either 31 or 14 pentagonal drinking glasses and diamond-shaped pillars of varying height, depends on the artisans' productivity. "Some weeks we get three glasses, others we'll get 50," said Omer Arbel, the Vancouver designer behind the project, who then assembles the glassware into bar-worthy sets. Replacements for broken pieces, said Mr. Arbel, "will be in weird new colors, and they'll completely change the composition." 31.52 Polygon Glassware Set, \$3,900, [oaoworks.com](http://oaoworks.com)



## Cheeky Crockery

Unleashing a stampede of dinosaurs on a set of china may sound disastrous, but that's precisely the appeal behind the designs of Don Moyer. Inspired by a piece of Willow china he inherited, the Pittsburgh artist started with the standard blue-and-white pagodas and bridges. "But I felt my version

needed Pterodactyls in the sky rather than traditional birds, and that would make me laugh," he said. New to the collection are a serving platter on which Jurassic monsters frolic (above) and a set of four 7-inch dishes peopled with percussion-playing apes. Dubious dinner companions, perhaps, but the creatures will trigger conversation. Dinosaurs Platter, \$56, [calamityware.com](http://calamityware.com)

—Lauren Ingram



The Super School Project

the quality of our politicians sets the quality of our schools

Text **FUTURE** to 225568 to learn more about high school and the future of work.

Visit **XQSuperSchool.org/Future** to learn more from XQ.

Msg and data rates may apply. XQ Institute is a 501(c)(3) organization.